

# FISH SMART in San Francisco Bay

Harmful chemicals like mercury and PCBs are in some fish in San Francisco Bay. **Women 18 - 45 years old and children should *only* eat the fish with less chemicals in them.**

有害化学物质诸如汞，多氯联苯等存在于三藩市海的某些鱼体内。妇女**18 - 45**岁和儿童应当只吃化学物质含量少的鱼。

Algunos tipos de pescado de la Bahía de San Francisco contienen químicos dañinos como mercurio y PCBs. **Las mujeres de 18 a 45 años y los niños solo** deben comer el pescado que contiene menos químicos.

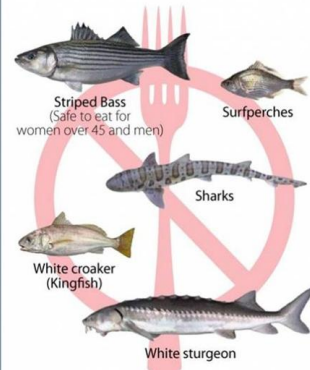


Learn more: [www.sfbayfish.org](http://www.sfbayfish.org) • (510) 622-3170

**EAT THIS**  
Less Chemicals



**NOT THIS**  
More Chemicals



## Fish Advisory Signs Posting Update

Aida Negrón

Maps: Kelsie Scruggs

June 14<sup>th</sup>, 2012

San Francisco Bay Fish Project

Stakeholder Advisory Group Meeting

Oakland, CA

## Signs Distribution Per County

County	Number of fishing sites	Number of signs at 2 signs per site	Extra signs (10%)	TOTAL
Alameda	35	70	7	77
Contra Costa	13	26	3	29
Marin	23	46	5	51
San Francisco	31	62	6	68
Santa Clara	2	4	1	5
Solano	9	18	2	20
San Mateo	16	32	3	35

Signs Posting Reported				
County	Number of fishing sites	Number of sites posted	Signs at the sites	Sites remaining to be posted
Alameda	35	2	4	33
Contra Costa	14*	6**	11	8
Solano	12*	6	7	6

\*New sites identified

\*\*Signs at other sites are being posted by East Bay Regional Parks



# Alameda County Postings



Site: Mulford Point  
4 signs



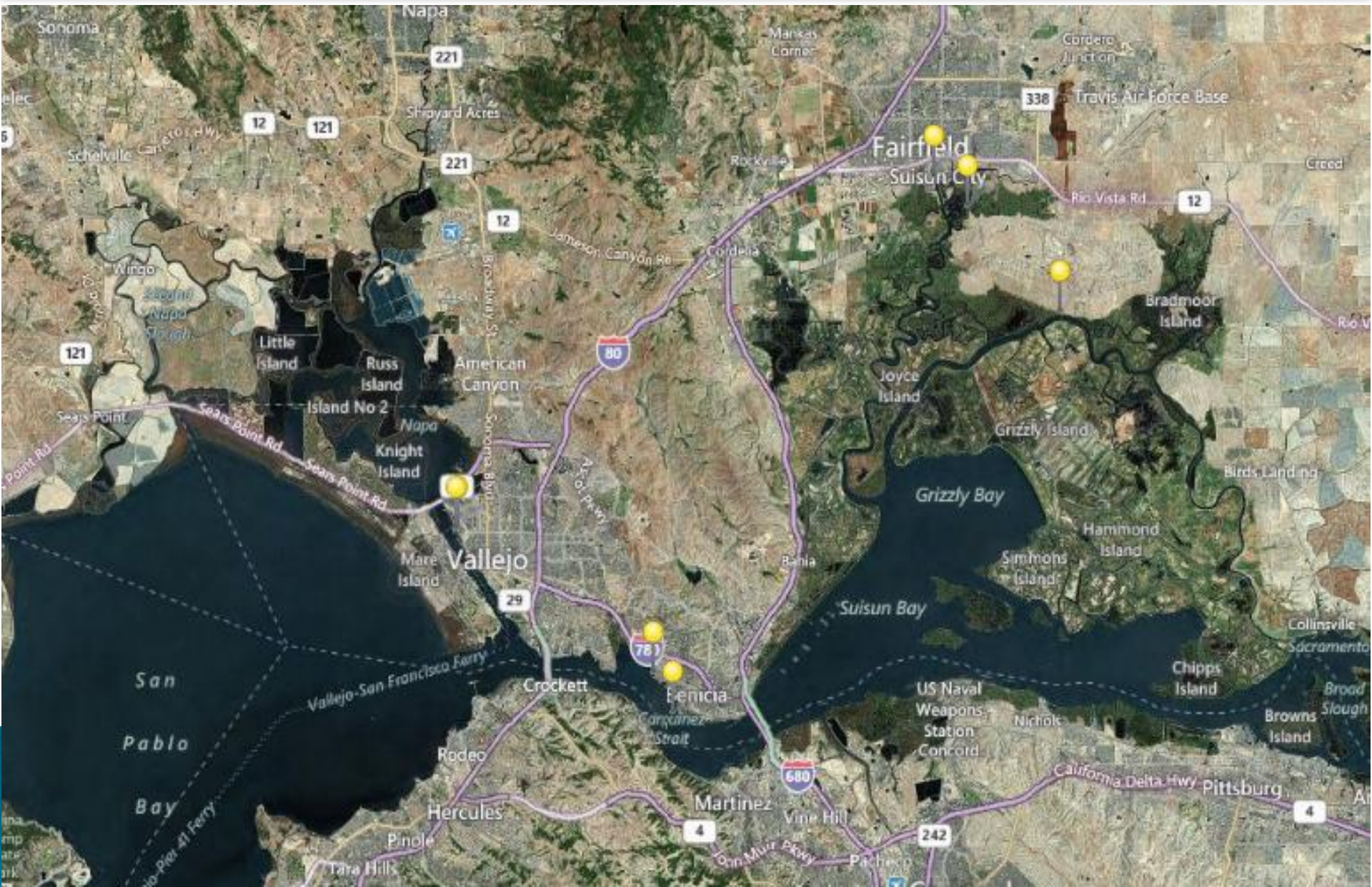
Public fishing pier at the end of Pescadero Point Dr.



Boat launch ramp (Monarch Bay Dr.)



# Solano County Postings







# FISH SMART in San Francisco Bay

Harmful chemicals like mercury and PCBs are in some fish in San Francisco Bay. Women 18-45 years old and children should only eat the fish with less chemicals in them.

有害化学物质诸如汞、多氯联苯等存在于三藩市海的一些鱼体内。妇女18-45岁和儿童应当只吃化学物质含量少的鱼。

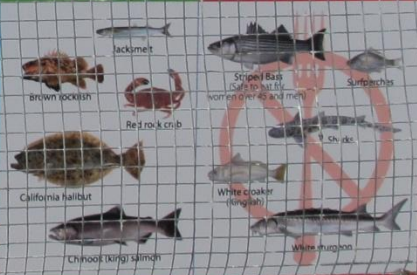
Algunos tipos de pescado de la Bahía de San Francisco contienen químicos dañinos como mercurio y PCBs. Las mujeres de 18 a 45 años y los niños solo deben comer el pescado que contiene menos químicos.



For more information, visit [www.sfbayfish.org](http://www.sfbayfish.org) • (510) 622-3170

**EAT THIS** Less Chemicals

**NOT THIS** More Chemicals



# Montezuma Bridge Shore

05/17/2012







# GATE 84

TRESPASSING OR LOITERING  
FORBIDDEN BY LAW

Pass Badge Must be Worn at All Times

Right to Pass by Permission, and Subject to  
Control of Owner, Section 1008 Civil Code

Vehicles Entering or Leaving This Refinery are  
Subject to Search and Vehicle Operator may be  
Required to Provide Acceptable Identification

## FISH SMART<sup>®</sup> in San Francisco Bay

**EAT THIS**  
Less Chemicals

**NOT THIS**  
More Chemicals



Point Molate Shore  
Gate 84 / Pier










## **Next Steps:**

- **San Francisco and San Mateo scheduling meetings to decide signs locations and schedules**
  - **Expanding to Napa and Sonoma (only a few sites)**
  - **Still working with Santa Clara and Marin**
- 



# FISH SMART

in San Francisco Bay

Harmful chemicals like mercury and PCBs are in some fish in San Francisco Bay. **Women 18 - 45 years old and children should *only* eat the fish with less chemicals in them.**

有害化学物质诸如汞，多氯联苯等存在于三藩市海的某些鱼体内。妇女**18 - 45**岁和儿童应当只吃化学物质含量少的鱼。

Algunos tipos de pescado de la Bahía de San Francisco contienen químicos dañinos como mercurio y PCBs. **Las mujeres de 18 a 45 años y los niños *solo* deben comer el pescado que contiene menos químicos.**

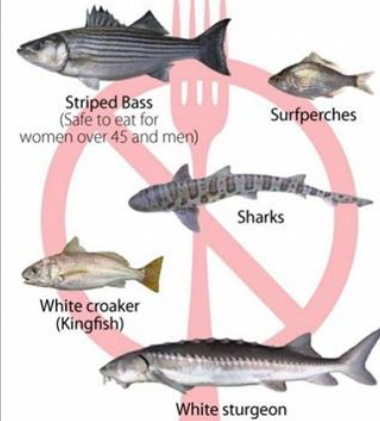


Learn more: [www.sfbayfish.org](http://www.sfbayfish.org) • (510) 622-3170

## EAT THIS Less Chemicals



## NOT THIS More Chemicals



Learn more: [www.sfbayfish.org](http://www.sfbayfish.org) • (510) 622-3170



Chinook (king) salmon



White sturgeon

